

TYPICAL OUTSIDE GREASE INTERCEPTOR & SAMPLING MANHOLE

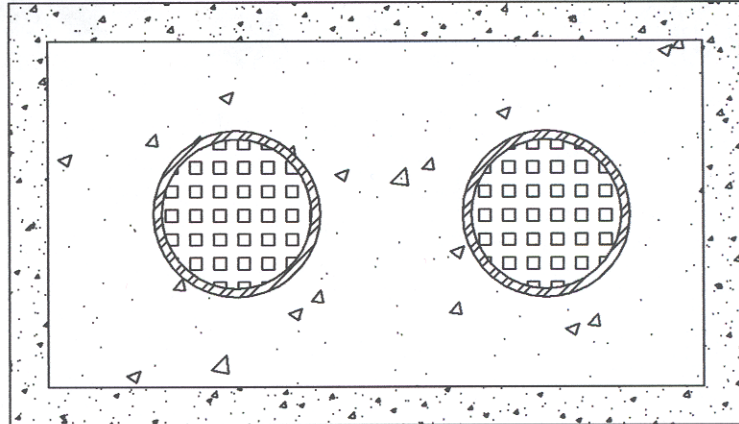
INFORMATION ON CLEANING OUTSIDE GREASE INTERCEPTORS

1. There should be an adequate number of access manholes to provide access for cleaning all areas of an interceptor.
2. All grease interceptors should be cleaned at regular intervals. The length of time between cleanings depends on the usage load. That is, the frequency of operation of the fixtures connected to the interceptor and the grease load of the drained waste. Skimming or pumping of the grease layer should be done at intervals frequent enough to prevent the need for excessive labor costs in removing heavy build-up of grease. By taking these factors into consideration one can determine a reasonable cleaning interval. A reasonable estimate can be made after the unit is actually in operation for a short but typical period of operation. New establishments should check the interceptor at least once per month for the first year after startup to determine an optimum cleaning frequency.
3. When cleaning, the entire tank should be cleaned, including solids from the bottom. This should be done at least once per year, or more frequently if necessary. After the tank has been completely cleaned, the tank should immediately be refilled with water by running water down the inside drains tributary to the tank.
4. Always deal with a reliable company for grease trap cleaning service. Many are licensed and permitted by the City for proper disposal of the waste at the City wastewater treatment plants. Permitted haulers are required to present a hauled wastewater manifest accompanying all loads of waste delivered to the City wastewater treatment plants. The manifest aids in producing a "paper trail" to be assured that your waste was disposed of properly and can also be used as documentation of cleaning frequency. Always ask the waste hauler for the generator's copy of the hauled wastewater manifest. Please find attached diagrams for a typical outside grease interceptor and sampling manhole as required by the City of Springfield. A 1,000 gallon grease interceptor is usually the minimum sizing requirement.
5. The sampling manhole is used by City inspectors to determine compliance with oil and grease limitations and interceptor maintenance, cleaning and performance. Be sure the sampling manhole is fully completed by the plumbing contractor; i.e. the sewer pipe going through the manhole has had the top one-half removed to allow sampling access. A concrete invert should be in place beside the bottom one-half of the remaining sewer pipe .
6. If you have any questions or need assistance, please call the City of Springfield's Pretreatment Program at 864-1923 and ask to speak to a member of the pretreatment staff.
7. ****Caution****, it is advisable to observe the entire pumping operation of your interceptor. Some pumpers may off-load or decant undesirable material from a previous pumpout into your interceptor to make room in their tanker for all or part of the contents of your interceptor. This practice may force undesirable waste to be discharged from the interceptor into your building sewer and subsequently into the City sewer. This may defeat the purpose of having a grease interceptor, may cause you to have your interceptor cleaned more frequently, may cause you to incur additional costs, and may cause you to be in violation of oil and grease wastewater regulations.
8. ****Caution****, never enter a grease interceptor or sampling manhole without consulting Title 29, Code of Federal Regulations, Part 1910, Confined Space Entry (Occupational Safety and Health Administration). Hazardous atmospheres, oxygen deficiency, etc. could be encountered!

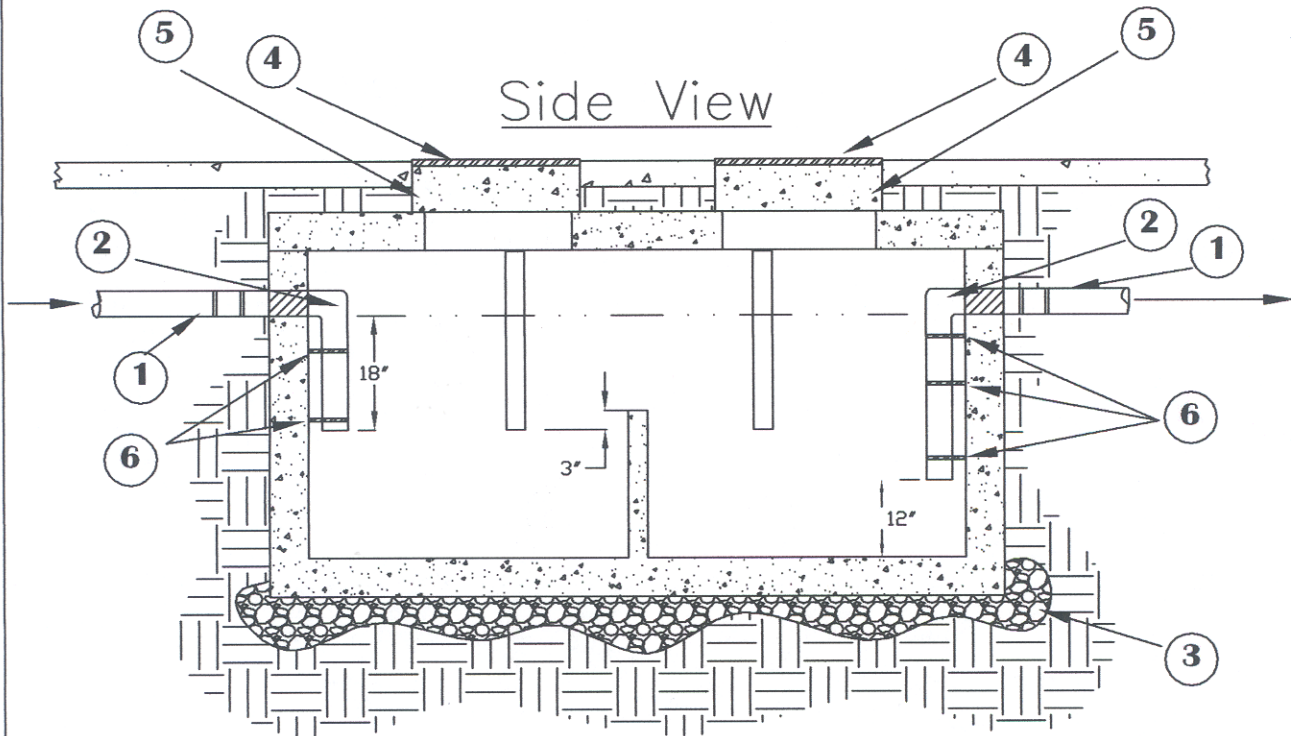
M:\Backup\MyFiles\GREASEmaint.doc

1000 Gallon Reinforced Concrete Grease Interceptor

Top View



Side View



	Description
1	4" Inlet and Outlet Pipe
2	4" 90° Elbow or T Connection
3	4"-6" Sand or Gravel Backfill
4	Heavy Duty Cast Iron Covering
5	Concrete Adjustment Rings
6	Stainless Steel Collar & Hardware



Typical
Design

DWG NO.

1

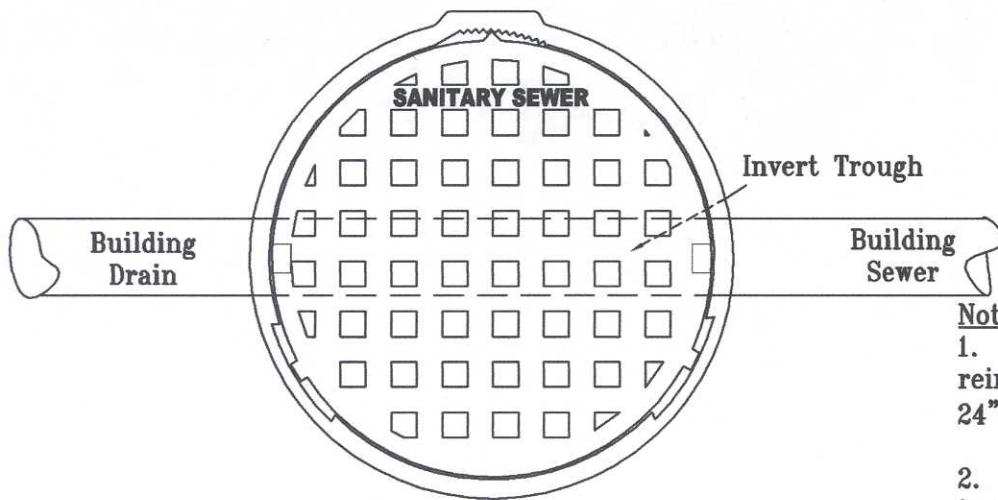
REV

1

SCALE 30

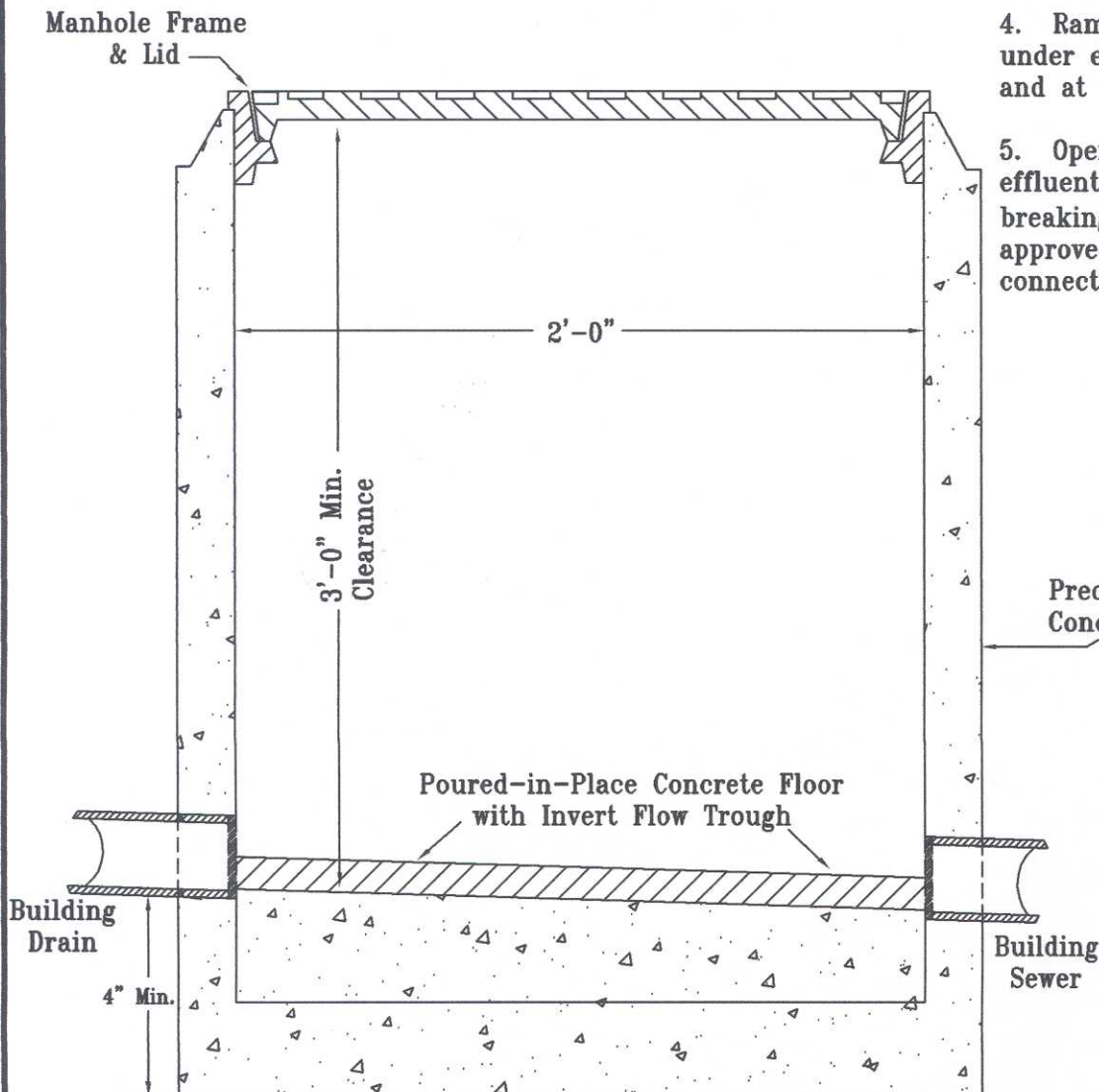
3/05

Typical Sampling Manhole Plan



Notes

1. Manhole shall be standard reinforced concrete pipe section, 24" I.D. x 4'-0".
2. Manhole floor shall be poured in place concrete.
3. Frame & lid shall be Neenah Slab Type R-5900-E or equal.
4. RamNek shall be applied under entire portion of the frame and at all concrete pipe joints.
5. Opening for influent and effluent pipe to be cored without breaking. Use "Inserta-Lok" or approved equal for pipe connection to manhole.



**CITY of
SPRINGFIELD**



DWG NO.

**Typical Sampling
Manhole**

REV.

22 Feb 06

Scale:

None